



4Eyes Home Edition
User's Guide

MICRO **JACK**
SOFTWARE

CONTENTS

1. Package Contents.....	1
2. Minimum System Requirements	1
3. 4Eyes Home Edition Installation	2
A. Hardware Installation	2
B. Software (Application) Installation	2
C. Driver Installation.....	3
D. Camera and Equipment	3
E. Camera Installation.....	4
4. System Operation.....	4
A. Main Screen	4
B. Setup	7
C. Playback.....	10
D. POP-UP Menu	11
5. WebCam Operation	13
6. FAQ	14
LIMITED WARRANTY.....	20

1. Package Contents

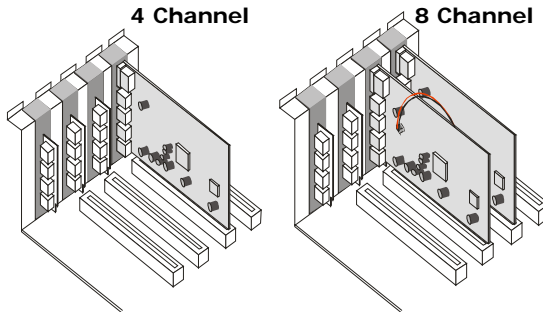
- MicroJack 4Eyes Home Edition Video Card
- TV Out Series Wire (connect 2 cards)
- 4x RCA to BNC adapter
- MicroJack 4Eyes Home Edition Software CD-ROM
(includes Driver, Application and User's Guide)
- MicroJack User's Guide

2. Minimum System Requirements

- CPU: Celeron 800MHZ and above or AMD
- O/S: Windows 98SE / ME / 2000 / XP
- RAM: 128MB or above
- 32-bit PCI 2.1 compliant bus slot
- HDD: at least 5 GB free space
- VGA: nVIDIA, ATI or Integrated VGA chipset
- CD-ROM drive
- Sound card and speakers
- 10/100 BaseT Ethernet card
- 56K full duplex voice modem (for phone alarm)
- One PCI Slot available

3. 4Eyes Home Edition Installation

A. Hardware Installation



When video card is installed, you will see the **Add New Hardware Wizard**. Click **Cancel** and then install software first.

B. Software (Application) Installation

After you successfully install the video card, Insert the Software CD-ROM and wait for auto-run. Click **MicroJack 4Eyes Home Edition** to start installing the application software and follow the instructions to complete the installation.



C. Driver Installation

After you have installed the application software, the system will reboot automatically. Please confirm that the CD-ROM is in the CD-ROM drive. After rebooting, you will see the **Add New Hardware Wizard** again. Click **Next** and then follow the instructions to install the driver.



D. Camera and Equipment

MicroJack 4 Eyes Home Edition card is suitable for RCA and BNC Connection. Cameras and essential equipment can be purchased in electronic or CCTV devices shops.



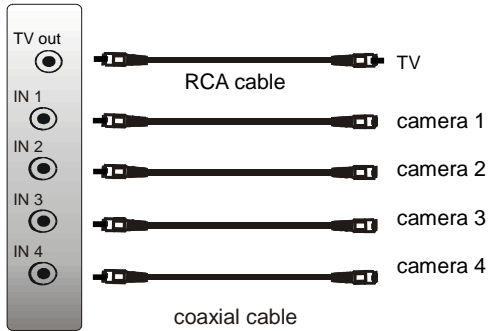
RCA cable



camera

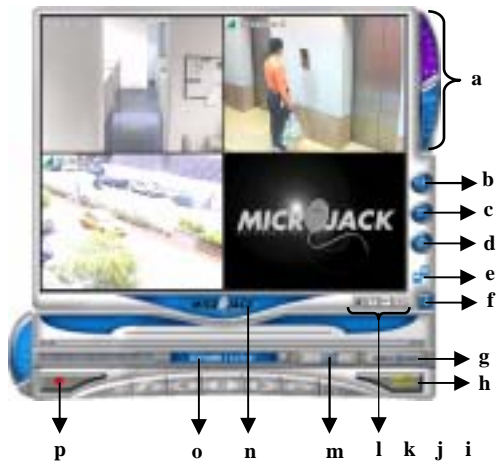
E. Camera Installation

After preparing all equipment, you can connect 4Eyes Home Edition video card and cameras.



4. System Operation

A. Main Screen



a. Channel 1~4 / Channel 5~8

Click the button to display channel 1~4 or channel 5~8. Channel 5~8 is disabled when only one card is installed.

b. Auto Scan

Automatically display channel 1~4 and channel 5~8 in rotation every 3 seconds.

c. Full View / Four Camera View

Click the button to switch the view mode.

d. Alarm State

When sensors are triggered, the button will sparkle with red light. Click again to stop alarm.

e. WebCam Connection State

When Network is working, the button will sparkle with blue light.

f. Hide Panel / Show Panel



g. Close

Shutdown 4Eyes Home Edition application.

h. Minimize

4Eyes Home Edition will be minimized on the toolbar by clicking the button.

i. About

The copyright page.

j. PIP mode

PIP (Picture in picture) mode of one channel.

Right-click on the PIP view to change the camera channel.



k. Web Site

MicroJack Multimedia, Inc. website.

l. Setup

Please see section **B**.

m. Snap Shot

Click the button to save real time full-view image or 4-camera-view image.

n. Current Time

To show the current time.

o. Playback

Click this button to playback. Please see section

C.

p. Recording / Stop Recording

Click the button to start recording. In the recording status, the triangle on the left top



of the view will become red. When motion is detected, another green triangle will show up.

Click again to stop recording.

B. Setup

a. Misc

- **Video Format:** the camera format. Taiwan area is suitable for NTSC.

- **Password:** if a password is set, the system will ask you to key in the password to start or close 4Eyes Home Edition.



- **Auto Recovery:** if the program is terminated abnormally, the system will execute 4Eyes Home Edition and recover the monitoring status when the computer is rebooted.

- **Economic Recording Mode:** record 5 frames per one second to save the hard disk space.

- **WebCam using Port:** the default is 80.

- **Alarm Sound:** a warning sound the system plays when sensors are triggered.

b. Alarm - Callout

- **Voice Modem:** please install full duplex voice modem for playing voice.
- **Telephone:** up to 5 telephone numbers can be set.



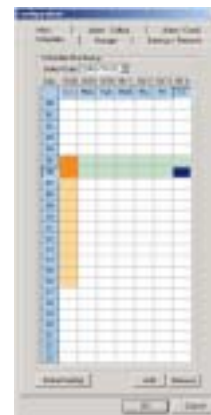
c. Alarm – Email

- **SMTP Server:** the default is 25.
- **The server requires authentication:** if check this item, please key in E-mail ID and password.
- **Message:** only support *.txt / HTML format files. See the figure on the next page.



d. Schedule

- **Schedule monitoring:** select a specific date to show a whole week schedule. Use mouse to drag and drop the time you want to record and then click **Add** to mark this period. Finally, click **OK** to save the setting.



- **Period Setting:** set which date and time you want to record and click **OK** to save the setting.



e. Storage

This tab shows all hard disks in your computer. Check which hard disks you want to save data in.

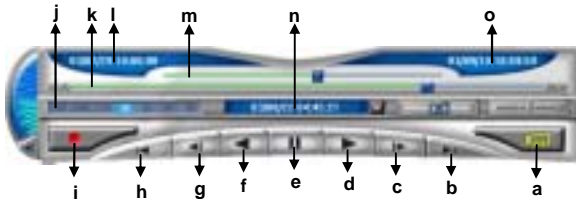


f. Backup / Remove

Select the Camera, Start Time, End Time to backup or remove data. If choose to backup data, you have to set a Backup Path to save.



C. Playback



a. Live View

Click the button to go back to live view mode.

b. Jump To End

Jump to the last frame.

c. Next Frame

Display the following frame.

d. Forward Play

Forward playback

e. Pause

Suspend playback.

f. Backward Play

Rewind the frame

g. Previous Frame

Display the last frame.

h. Jump To Beginning

Jump to the first frame.

i. Recording / Stop Recording

Recording can be executed under playback mode.

j. Playback Speed

7-step playback speed: 8x, 4x, 2x, 1x, 1/2x, 1/4x, 1/8x.

k. Slider (1 hour)

Show a certain one hour of selected recorded files to playback.

l. The Start Time Of The recorded files

m. Slider (Whole Record)

The total time of selected recorded files to playback.

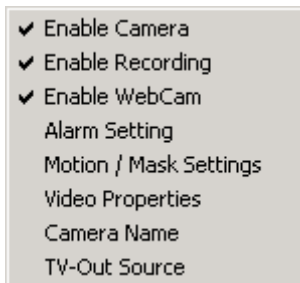
n. Select Date / Time

The date and time of the selected recorded files to playback.

o. The End Time Of The recorded Files

D. POP-UP Menu

Right click on every camera view, the following menu will pop up.



a. Enable Camera

If the item is not checked, this camera is in a non-working status. If you don't install a camera for this channel, please un-check the item to avoid affecting the qualities of other cameras.

b. Enable Recording

If the item is not checked, this camera cannot record but still on.

c. Enable WebCam

If the item is not checked, you cannot see the camera view of this channel on WebCam.

d. Alarm Setting

Check the alarm conditions (***Motion Detected*** or ***Video Loss***), the system



will execute the

action you check (***Enlarge Camera View***, ***Sound Alarm***, ***Call Out*** or ***Send Email***) when sensors are triggered.

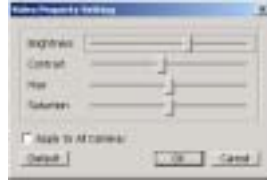
e. Motion / Mask Settings

Use mouse to drag and drop an area you do not want to be detected.



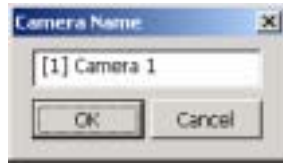
f. Video Properties

In this dialog box, you can adjust the **Brightness**, **Contrast**, **Hue** and **Saturation** of the frame.



g. Camera Name

Each camera name can be changed in this dialog box.

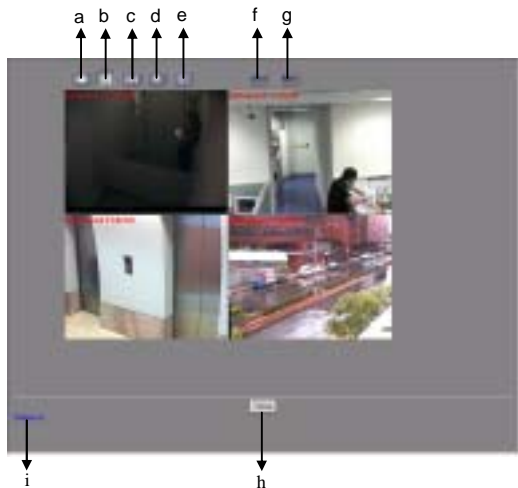


h. TV-Out Source

Only one camera can be TV-Out source.

5. WebCam Operation

Key in the IP or domain name of desired server to browse the home page of WebCam with IE.



- a. **Full View**
- b. **4-Camera View**
- c. **6-Camera View**
- d. **8-Camera View**
- e. **9-Camera View**
- f. **NEXT**

Click the button to display the following camera view.



- g. **SET**

Click the button to assign different cameras to different channels by server channel number to change the display sequence.

- h. **Version 1.0**

Download OCX WebCam element for manual installation.

- i. **Close**

Shutdown WebCam.

6. FAQ

** Applicable to V.1.0*

A. Installation

Q: How to install 4Eyes Home Edition correctly?

A: After inserting the video card, when your PC boots, you will see a message, "New hardware found," and ask you

to search for driver. Please cancel it and go to installation page of CD to install 4Eyes Home Edition software first. Then, reboot the PC again to install drivers.

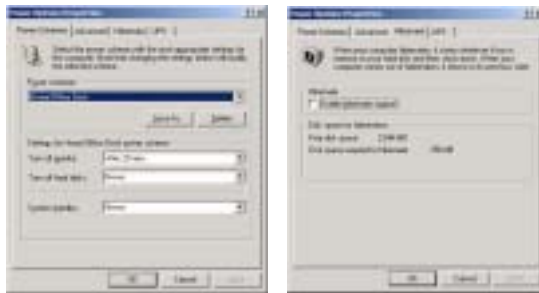
Q: After my computer recovered from sleep mode 4Eyes Home Edition doesn't response.

A: After installation of 4Eyes Home Edition please check your system power management configuration and make sure hard drive will never enter sleep mode.

【 Desktop \ Properties \ Screen Saver \ Power 】 :

In the **Power Schemes** tab, please set **Turn off hard disks** to **Never**.

In the **Hibernate** tab, please do not check **Enable hibernate support**.



Q: What kind of camera I can use with 4Eyes Home Edition and where can I buy them?

A: There are various types of camera. A typical set is 4 color (or B&W) CCTV cameras and coaxial cable with composite connectors. (see manual) Contact your local electronic or CCTV devices shops for information and inquiry.

[RCA Connector + Coaxial Cable connect video card and camera]



Q: I can't open the manual in the CD?

A: The manual is in PDF format and requires Adobe Acrobat Reader to open it. Acrobat Reader is a free software. You can find it in 4Eyes Home Edition CD \Acrobat\AdbeRdr60_enu.exe. Just double click AdbeRdr60_enu.exe and follow instructions to install it.

B. Video Quality

Q: Why the channel is white after I connected one camera?

A: This is because you connect only one camera and auto gain control (AGC) function starts working. Please either disable the rest channels or connect all 4 cameras to 4Eyes Home Edition.

C. Recording

Q: Can I change the default folder name (Smart Guard Save) for recording?

A: No! If you do so, 4Eyes Home Edition won't be able to record, playback and backup video files in that folder.

Q: How long my PC can record using 4Eyes Home Edition?

A: 4Eyes Home Edition is using MPEG4 compression technology and records in motion detection mode which is the most effective combination for security video recording. For a 40GB hard drive the recording time can be 4 to 10 days depending on motion intensity of each channel. (4CH, 24 hr recording)

Tip

It is recommended not to assign the path for recording in the system drive (ie. C:). It is better to record in d:, e: ...

D. Backup

Q: When I specify time period from 10:00AM to 4:00PM for backup what 4Eyes Home Edition will do?

A: 4Eyes Home Edition will backup video from 10:00:00AM to 4:59:59PM. That means the whole hour video (4:00:00PM ~ 4:59:59PM) will be copied to backup folder.

Q: How does 4Eyes Home Edition copy video files for backup?

A: All backup video files are divided into 650MB and kept in folders (CD1, CD2, CD3, ...) which are suitable for burning in CD-R. If you want to backup video again, make sure to clear previous folders first or assign a different path so as not to mix up backup video files.

E. Playback

Q: How can I use Media Player to play video files recorded by 4Eyes Home Edition?

A: 4Eyes Home Edition records video in AVI format. However, because of MPEG4 compression you need to install this particular codec before playback. You can find the codec XVID in two places: 1. In the CD under folder \Tool; 2. under C:\Program Files\MicroJack\4Eyes Home Edition\Backup after installation. Just double click it and follow the instructions to install it.

F. Alarm

Q: There is no voice message when I answer phone alarm from 4Eyes Home Edition.

A: Check out your Callout alarm settings and make sure the voice file can be played in the PC. Second, your modem must support full duplex voice transmission. Most modem should support this function unless the model is too old.

Q: Why I can't record any sound file for Sound alarm or Voice message?

A: Please make sure your PC can record sound file correctly. 4Eyes Home Edition uses Windows audio recorder to do the job so if Windows doesn't work properly, 4Eyes Home Edition can't record sound file.

Q: Why I can play .wav file in my PC but I can't hear the same file sent by 4Eyes Home Edition through telephone?

A: The default quality of .wav file recorded by Windows recorder is CD quality, but the .wav file sent by voice modem must be "Mono, 8KHz, 16 bit". You can use the Windows audio recorder to create the .wav file and select the correct quality for Phone alarm.

G. Remote view

Q: How can I connect to 4Eyes Home Edition through Internet Explorer?

A: The easiest way is to subscribe ADSL line with fixed IP. You can type the fixed IP in the website field to link to 4Eyes Home Edition.

H. General

Q: Can I do other jobs or play MP3 with my PC when 4Eyes Home Edition is working?

A: Yes, 4Eyes Home Edition uses very few computer resources so that you can install it in your home PC. However, some applications may use more computer resources (for example: CD burning, video editing, games). If you experience your PC becoming unstable, close some applications.

LIMITED WARRANTY

MicroJack Multimedia, Inc. warrants that this product to be free of defects resulting from faulty manufacturing or components under the following terms:

WARRANTY LENGTH

Labor is warranted for 1 year from the date of purchase.

Replacement products will be warranted for the remainder of the 1-year warranty period or 30 days, whichever is longer.

WHO IS PROTECTED

This warranty is enforceable only by the first consumer purchaser.

WHAT IS AND IS NOT COVERED

Except as specified below, this warranty covers all defects resulting from faulty manufacturing of this product. The following are not covered by the warranty.

1. Any product on which the serial number has been defaced, modified, or removed.
2. Damage, deterioration, or malfunction resulting from:
 - A. Accident, abuse, misuse, neglect, fire, water, lightning, or other acts of nature, commercial or industrial use, unauthorized product modification, or failure to follow instructions included with the product.
 - B. Misapplication of service by someone other than the manufacturer's representative.
 - C. Any shipment damages. (Claims must be made with carriers.)
 - D. Any other cause that does not relate to a product defect.
3. Cartons, cases, batteries, cabinets, tapes, or accessories used with the product.
4. **MicroJack Multimedia Inc.** does not warrant that this product will meet your requirements; it is your responsibility to determine the suitability of this product for your purpose.

WHAT WE WILL AND WILL NOT PAY FOR

We will pay labor and material expenses for covered items. However, we will not pay for the following:

1. Removal or installation charges.
2. Shipping charges.
3. Any incidental charges.

EXCLUSION OF DAMAGES

THE MANUFACTURER'S SOLE OBLIGATION AND LIABILITY UNDER THIS WARRANTY IS LIMITED TO THE REPAIR OR REPLACEMENT OF A DEFECTIVE PRODUCT AT OUR OPTION. THE MANUFACTURER SHALL NOT, IN ANY EVENT, BE LIABLE TO THE PURCHASER OR ANY THIRD PARTY FOR ANY INCIDENTAL OR CONSEQUENTIAL DAMAGE (INCLUDING, BUT NOT LIMITED TO, DAMAGES RESULTING FROM INTERRUPTION OF SERVICE AND LOSS OF BUSINESS) OR LIABILITY LIMITATIONS OF IMPLIED WARRANTIES.

There are no other oral or written warranties, expressed or implied, including but not limited to those of merchantability or fitness for a particular purpose. Any implied warranties are limited in duration to 1 year from the date of purchase.

STATE LAW AND YOUR WARRANTY

This warranty gives you specific legal rights, and you may also have other rights granted under state law. These rights vary from state to state.

CONTACT INFORMATION

TEL: 716-626-3270

Web Site: www.microjack.com